

BOSCO-solar

Datasheet



Just like other solar luminaires, the BOSCO solar is a stand-alone luminaire. Thanks to the built-in battery pack, the BOSCO solar can be used anywhere. The fixture is equipped with a PV panel in combination with a state of the art built-in control electronics and energy storage. The Timberlab solar luminaires are all about sustainability.



timberlab
natural outdoor solutions



SPECIFICATIONS

- **Wood species:** Chestnut
- **Dimensions:** 180 - 200mm
- **IP grade:** IP54
- **Power per LED module:** 1 Watt max.
- **Lumen output per LED module:** Lumen output varies depending on season and weather.
- **Beam angle:** 155x65*
- **Lifespan:** Every type of wood has its own durability class. More information can be found at "Wood species" & "Sustainability". The LED module has an expected lifespan of 108.000 hours.
- **Photometric data:** Available on request.

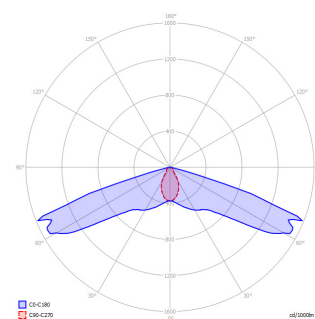
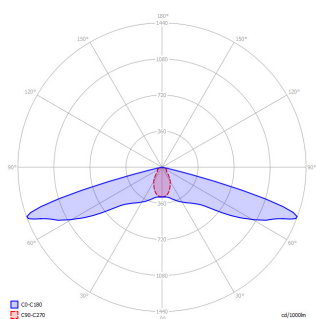
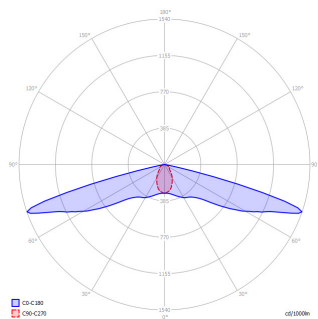
OPTIONS

- **Certification:** PEFC
- **Post support:** The BOSCO-solar is available with an anti-theft solution which makes it more difficult to remove the luminaire.
- **Colour temperature:** Available in 2.700K, 4.000K and Amber (593nm).
- **Sensor:** The luminaire can be fitted with a built-in PIR sensor. The LED will illuminate at 10% after switching on. When motion is detected, the LED will switch temporarily (5min) to the maximum light output.
- **Variations :** All Timberlab products are unique. In addition to our standard options, we offer customization. Think of adding logos, sockets or different dimensions.



Only products indicated with the FSC® claim are FSC certified and come with our FSC-certificate number NC-COC-029615-KE. Only products indicated with the PEFC™ claim are 100% PEFC certified and come with our PEFC-certificate number NC-PEFC/COC-029615-FJ.

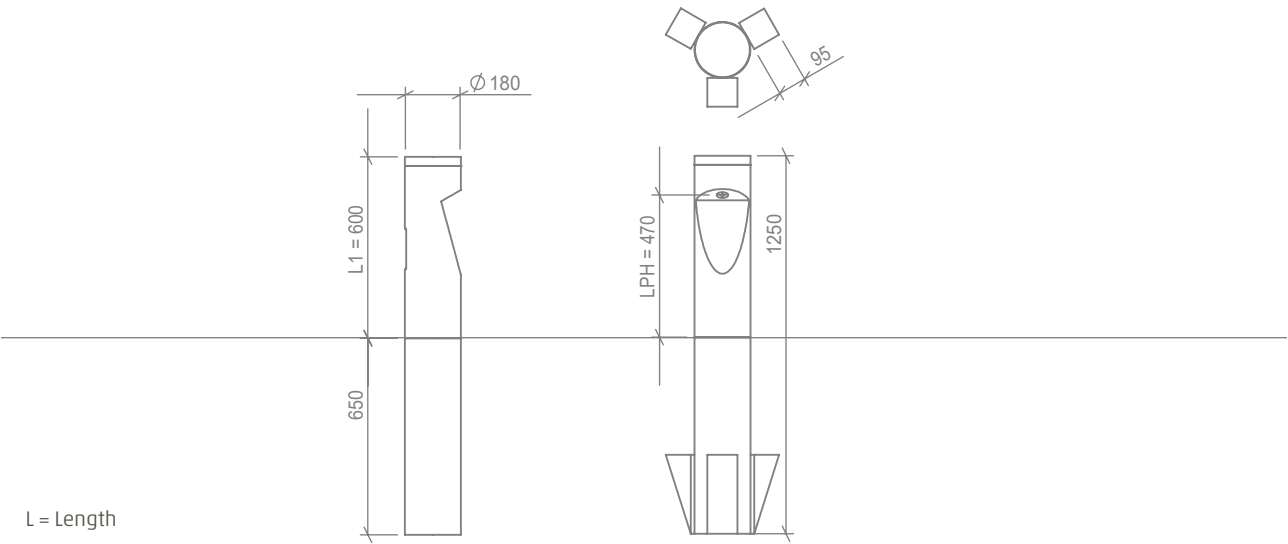
LED MODULES



	TBL path light module 2.700K	TBL path light module 4.000K	TBL path light module AMBER 593 nm
Voltage	n.a.	n.a.	n.a.
Power	1W	1W	1W
Power factor	0.36*	0.36*	0.34*
Lumen output	50 lm	63 lm	23 lm
Efficiency	50 lm/W*	63 lm/W*	23 lm/W*
Colour temp.	Warm White 2700K 2654K*	Cool White 4000K 3801K*	AMBER x=0.5977 y=0.3996.*
CRI	84*	72*	n.v.t.
Dimmable	on request	on request	on request
Label	A+	A+	B
IP grade	IP 54	IP 54	IP 54
Beam angle	156x64*	154x65*	151x58*
Number of LEDs	1	1	1
Temperature range in operation	-20...+50°C	-20...+50°C	-20...+50°C
Lifespan	100.000 h	100.000 h	100.000 h
* Measured values			



DIMENSIONS AND WEIGHT



Weight chestnut	20 kg	20 kg
CO2 storage chestnut	32 kg	32 kg

PRODUCT CODE GENERATOR

Product family	Wood species	Certification	In ground / post support	Colour temp.	Type	Voltage	Variations
XX	X	X	XX	X	X	X	XX
21= BOS-CO-solar	2= Chestnut	0= N.a. 2= PEFC	00= Length 1 + 600mm in ground	1= 2.700K 3= 4.000K 4= Amber	0= Without PIR 1= With PIR 2= Without PIR with anti-theft 3= With PIR with anti-theft	0	00

EXAMPLE

BOSCO-solar, Chestnut, PEFC, Length 1 + 600mm in ground, 2.700K, Without PIR
Product code: 21220010000